

# ***EZ Mod Walls***

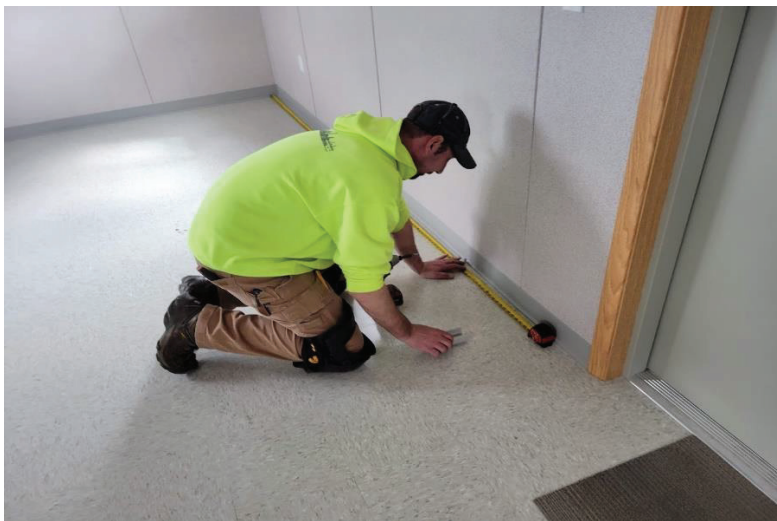
## **INSTALLATION MANUAL**

EZ Systems, Inc.  
27640 SE Hwy. 212 Bldg. 4 Unit B  
Boring, OR 97009  
office@ezmodwalls.com | 1-800-501-0039  
www.ezsystems.com



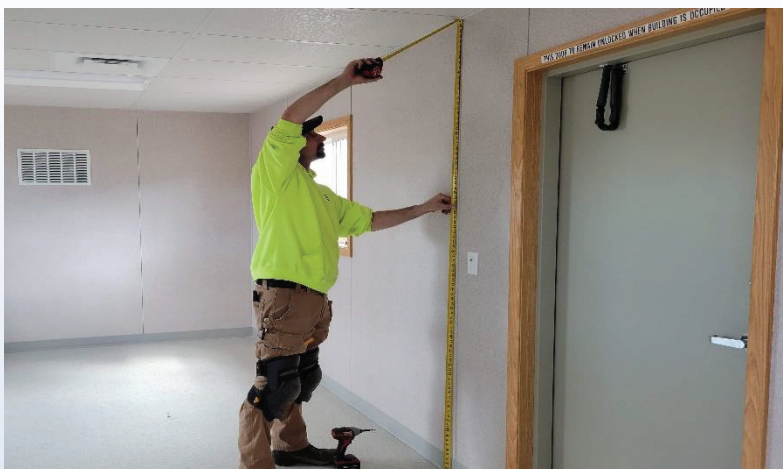
When choosing a location to install the Mod Wall, it is preferable to do so where the main wall stud layout is. Make sure there is no obstruction on the floor or ceiling.

1



Starting from the door side layout, cut your first piece of bottom track to 5" and secure it to the floor up to the edge of the base. No need to cut the base.

2



On the door side, measure from floor to ceiling and cut the starter post 1/2" shorter.

3



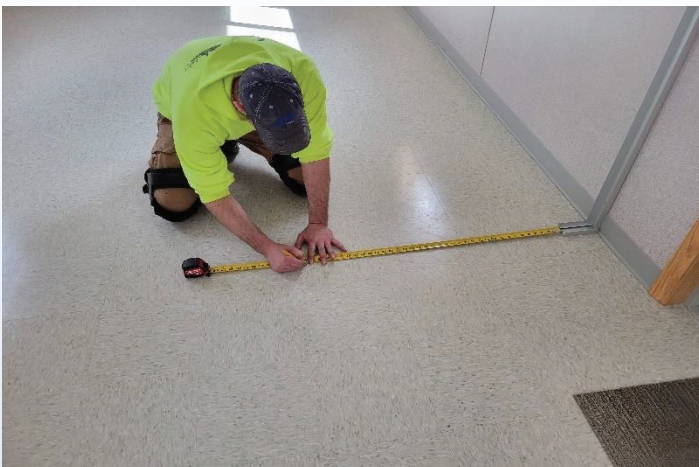
Position the starter post into the bottom track against the wall.

4



Plumb starter post with a level and secure to the wall with four screws.

5



Measure over 37" clear for the door opening and make a mark.

6





Measure over from the other side from the edge of the base to your mark.

7



Cut bottom track as measured. Secure by using the H-post to line up the door opening.

8



Cut the H-post and the ender-pairs the same as the starter-post, 1/2" shorter than the overall floor to ceiling height. Use the H-post and a level to mark where the top-track will be placed then set aside.

9

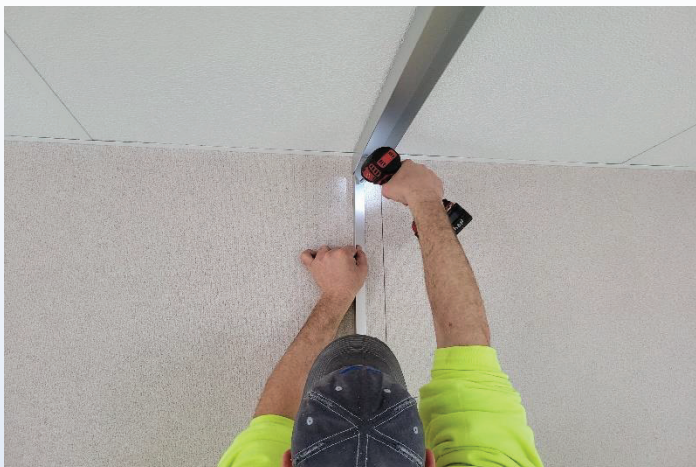




Measure the ceiling wall width and cut the top-track 1/16" short. Place the end of the top-track over the strater track and raise up the other end to the mark on the wall you just made. Secure the top-track to the ceiling every 24".



Note: If you are tall enough to not need a ladder you can use the H-post to align and raise the top-track as you secure it.



Place one side of the ender-pair post by placing on one side of the bottom-track and top-track. Secure with 4 screws. Leave the remaining ender-pair piece for later.



The first panel you will install is the 5" wide door side panel.

12



Cut the top of the door panel assembly 1 1/2" shorter than the floor to ceiling height. Use a saw blade with as many teeth as possible to cut through the pre-assembled H-posts and wall panel.

13



Insert the top of the door panel up into the top-track far enough to get over and into the bottom-track.

14

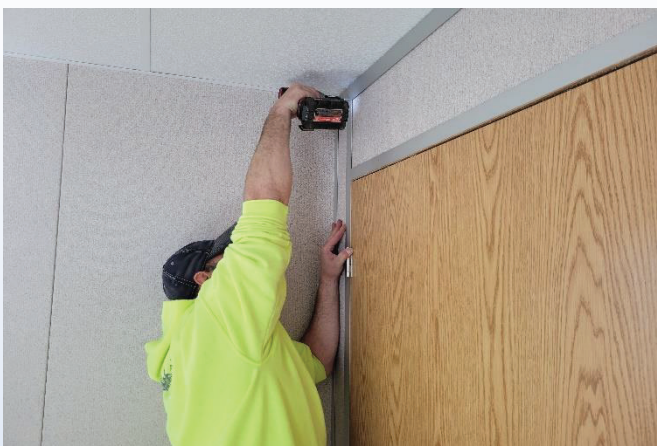


Note: Door should sit into bottom track.



Secure bottom hinge side of door panel H-post to the bottom track.

15



The top of the door hinge side H-post can slide back or forth as needed to align the door reveal. Once aligned, secure the H-post to the top track. Note: It is best to wait to secure both sides (inside and outside) of the door panel H-post until the other side is set just in case adjustments are needed after the wall is fully installed.





Cut the zip-tie and remove the plastic pipe at the door latch.

17



Adjust the door reveal as needed and secure the latch side of the door panel H-post to the bottom-track then the top-track.

18



Next is to install a full 48" wide wall panel. Cut the wall panel 1 1/2" shorter than the floor to ceiling height. Insert the top of the wall panel up into the top-track for enough to get over and into the bottom-track.

19



Slide the wall panel into the door panel H-post. Make sure the wall panel is fully within the H-post top and bottom. No screws are needed yet.

20



Cut the next H-post from 1/2" shorter than the floor to ceiling height. Insert the H-post into the top-track and over and into bottom-track. Push over and into the wall panel. No screws are needed yet.

21



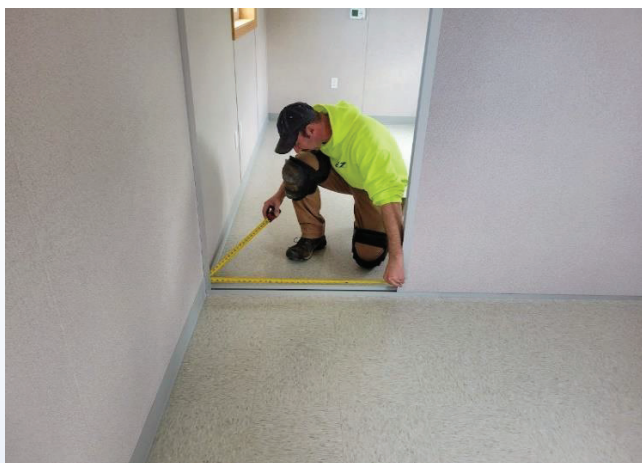
For the last Mod Wall panel, measure over from the outside edge of the H-post to the inside of the ender-pair already installed.

22



Measure both top and bottom in case there is a difference. Cut the panel just slightly narrower so that it can be slid up into the top-track and over and into the bottom-track.

23







Slide up into the top-track and  
over and into the bottom-track.

# 24



Slide the panel over into the  
H-post leaving a 3/8" or so gap  
between the Mod Wall panel and  
the building wall.

# 25



Now the H-post between the two Mod Wall panels can be slid over towards the last panel installed, centering it so all wall panel edges are covered. Secure the H-post to the bottom and top track.

# 26



Insert the remaining ender pair angle up into top-track and down into the bottom-track and secure.

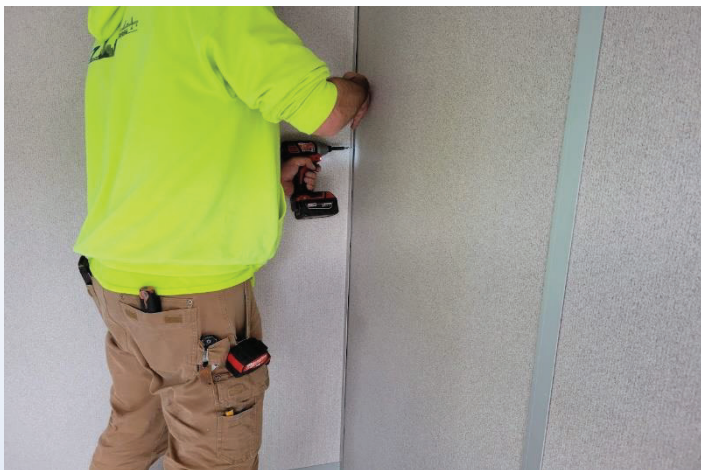
# 27





Add one or two screws in the center area.

# 28



Do the same on the other side of the wall.

# 29





Your wall is just about done! Check and adjust the door if needed and secure the other side now. Open and close the door. If any of the wall panels rattle add additional screws as needed.

# 30



Next, install the lockset...



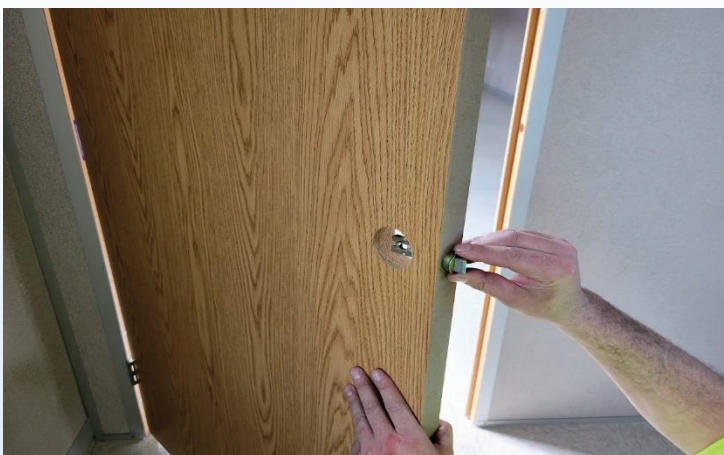
Remove the base plate.

# 31



Replace with the push-in bushing.

32



Push the latch into the door.

33



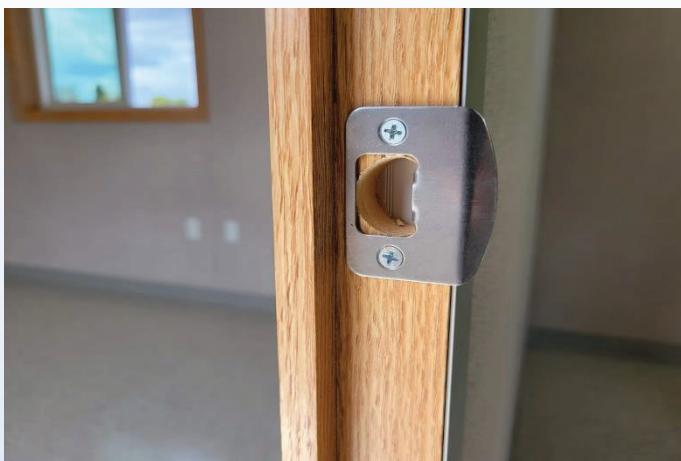
Tap it flush to door.

34



Install lever lockset with screws facing inside the room.

35



Install the latch strike plate.

36





Adjust door reveal and secure H-post into panel on both sides.

37

### **Additional information for door reversal:**

The door swing on the EZ Mod Wall door panel can be removed and set to swing in all four different directions, left or right in-swing or out-swing.

The door swing can be changed on the bench or leaning on the wall but the easiest way is when the door is already installed because of the support.



Remove both door hinge pins by tapping them out with a punch and hammer.

38



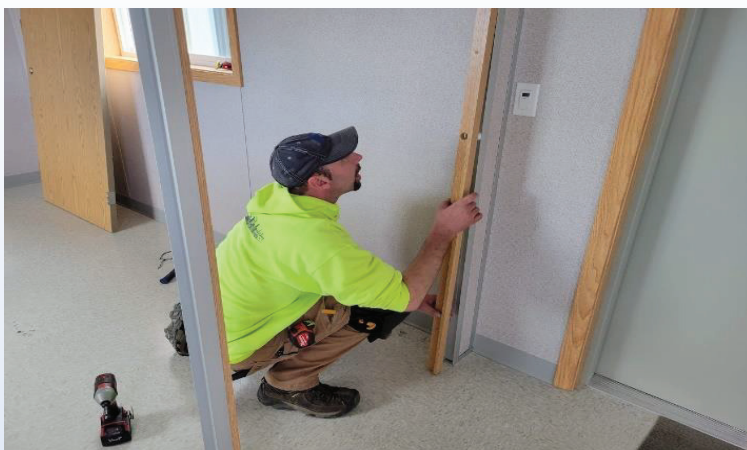
Remove the door and set to the side.

39



Remove the four jamb screws on the latch side and the four screws on the hinge side.

40



Pull out and down on the bottom of the jamb trim. Once the door jamb trim is below the header trim set the jamb aside and do the same on the hinge side.

41



Re-install the jamb trim by sliding the trim up behind the header trim. In this case we want the door to swing in. If we wanted the door to swing out, the door header jamb trim can be removed and turned around.

42



Re-install the four screws on the hinge side jamb. Repeat for the latch side jamb.

43



Flip the door over to re-install.

44





Align the hinges, slip in the hinge-pins and tap down.

45



Your walls are complete!

46

**Thank you for your purchase!**

***EZ Mod Walls***

**Modular Office Wall & Partition Solutions**